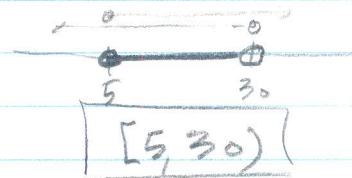


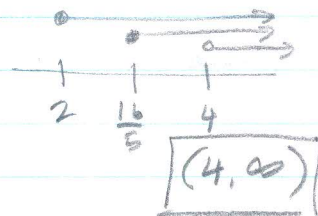
SOLVING RADICAL INEQUALITIES WS

1) $\sqrt{x-5} < 5$ $x-5 \geq 0$
 $x-5 < 25$ $x \geq 5$
 $x < 30$

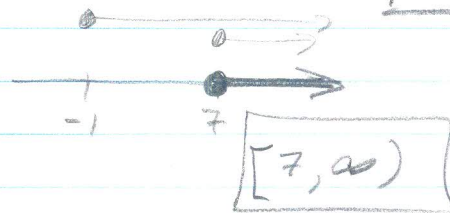


2) $\sqrt{5x+13} \leq -2$
 \uparrow
 \emptyset

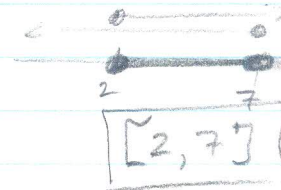
3) $\sqrt{5x-16} > \sqrt{2x-4}$ $5x-16 \geq 0$ $2x-4 \geq 0$
 $5x-16 > 2x-4$ $5x \geq 16$ $2x \geq 4$
 $3x > 12$ $x \geq \frac{16}{5}$ $x \geq 2$
 $x > 4$



4) $\sqrt{2x+2} \geq 4$ $2x+2 \geq 0$
 $2x+2 \geq 16$ $2x \geq -2$
 $2x \geq 14$ $x \geq -1$
 $x \geq 7$



5) $\sqrt{5x-10} \leq 5$ $5x-10 \geq 0$
 $5x-10 \leq 25$ $5x \geq 10$
 $5x \leq 35$ $x \geq 2$
 $x \leq 7$



6) $6 > \sqrt{4x-4}$ $4x-4 \geq 0$
 $36 > 4x-4$ $4x \geq 4$
 $40 > 4x$ $x \geq 1$
 $10 > x$
 $x < 10$

