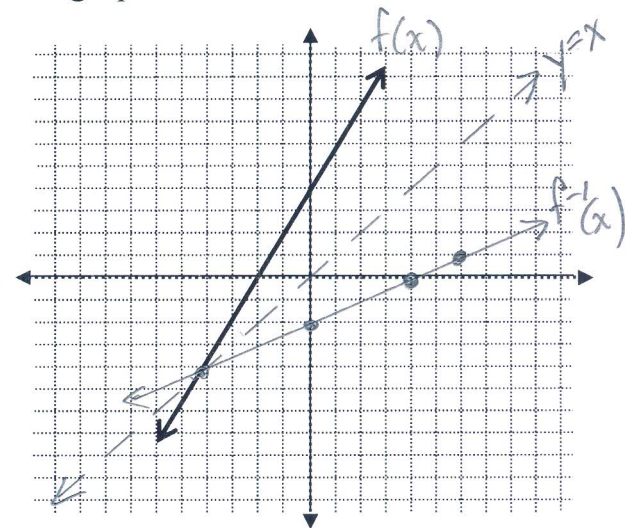


1. The given coordinates are on $f(x)$, find the coordinates for $f^{-1}(x)$.

- a. $(-2, 4)$ $(4, -2)$
- b. $(4, 7)$ $(7, 4)$
- c. $(0, 11)$ $(11, 0)$
- d. $(-3, -8)$ $(-8, -3)$
- e. $(10, 10)$ $(10, 10)$

2. Answer each question regarding the function shown in the graph.

- a. What is the x-intercept of the function? $(-2, 0)$
- b. What is the y-intercept of the function? $(0, 4)$
- c. What is the x-intercept of the inverse? $(4, 0)$
- d. What is the y-intercept of the inverse? $(0, -2)$
- e. Name one other point on the function. $(1, 6)$
- f. Name one other point on the inverse. $(6, 1)$
- g. Graph the $y = x$ line with a dotted line.
- h. Graph the inverse.



3. Answer each question regarding the function shown in the graph.

- a. What is the x-intercept of the function? $(3, 0)$
- b. What is the y-intercept of the function? $(0, -3)$
- c. What is the x-intercept of the inverse? $(-3, 0)$
- d. What is the y-intercept of the inverse? $(0, 3)$
- e. Name one other point on the function. $(4, 3)$
- f. Name one other point on the inverse. $(3, 4)$
- g. Graph the $y = x$ line with a dotted line.
- h. Graph the inverse.

